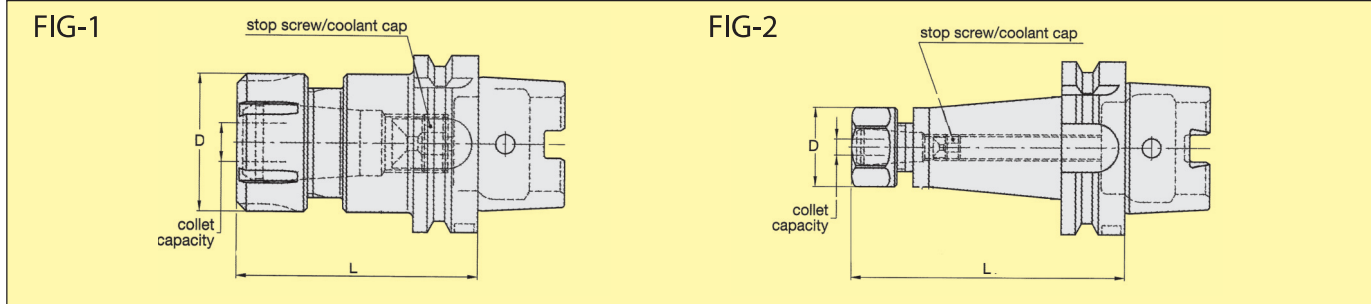


# HSK 63A Shank Tools

## DIN 69893 part 1, form A

### ER Collet Chucks



Balanced by Design, Through tool holder coolant capability

Order Example – HSK63AER25100M

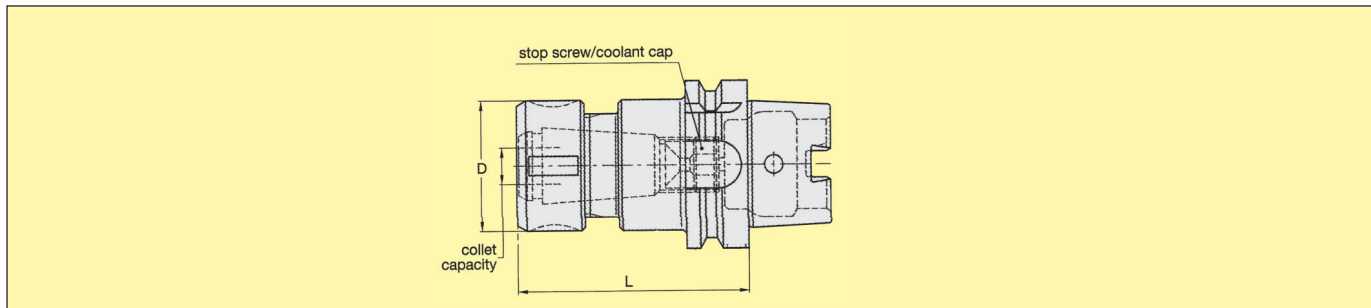
Dynamically balanced to G6.3 @ 15,000 rpm & G2.5 at 20,000 rpm, available on request

Order Example – HSK63AER25100M-G2.5

### ER Collet Chucks

Catalogue No.	Collet Series	Collet Cap Min.-Max.	Fig	D	L	Wt. Kg.	Locknut	Wrench	Stop Screw
HSK63AER16100M	16ER	0.5 – 10	2	28	100	0.90	LNHER16M	OEW25M	BSS044038G
HSK63AER16160M	16ER	0.5 – 10	2	28	160	1.32	LNHER16M	OEW25M	BSS044038G
HSK63AER20100M	20ER	0.5 – 13	2	34	100	1.03	LNHER20M	OEW30M	BSS056041G
HSK63AER25100M	25ER	1 – 16	1	42	100	1.18	LNER25M	ER25WM	BSS075041G
HSK63AER32100M	32ER	2 – 20	1	50	100	1.37	LNER32M	ER32WM	BSS094041G
HSK63AER40120M	40ER	3 – 26	1	63	120	1.80	LNER40M	ER40WM	BSS112041G

### TG Collet Chucks



- Tremendous Grip, Balanced by Design, Through tool holder coolant capability
- Order Example – HSK63ATG075115M
- Dynamically balanced to G6.3 @ 15,000 rpm & G2.5 at 20,000 rpm available on request
- Order Example – HSK63ATG075115M-G2.5

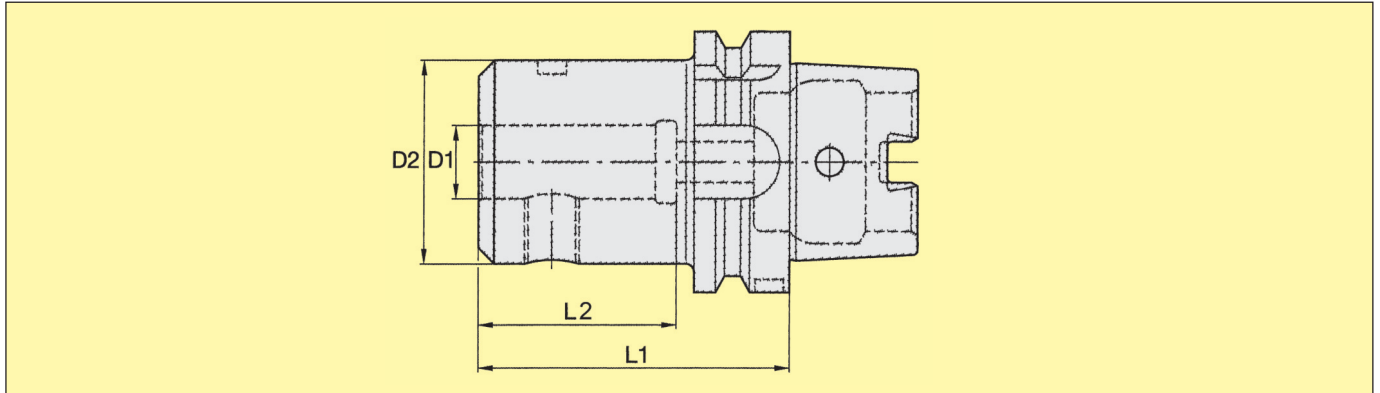
### TG Collet Chucks

Catalogue No.	Collet Series	Collet Cap Min.-Max.	D	L	Wt. Kg.	Locknut	Wrench	Stop Screw
HSK63ATG075115M	75TG	2.6 – 20.00	50	115	1.65	LNA075M	HSW45M	BSS081041G
HSK63ATG100135M	100TG	2.6 – 25.50	60	135	2.05	LNA100M	HSW58M	BSS112041G

# HSK 63A Shank Tools

## DIN 69893 part 1, form A

### End Mill Adapters - Inch

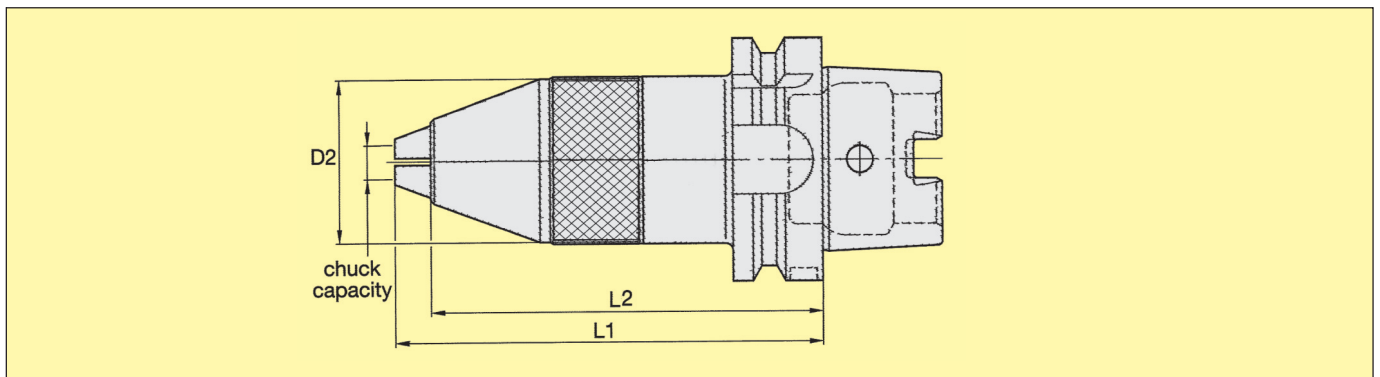


- Balanced by Design, Through the tool holder coolant capability
- Order Example – HSK63AEM025300
- Dynamically balanced to G6.3 @ 15,000 rpm & G2.5 at 20,000 rpm available on request
- Order Example – HSK63AEM025300-G2.5

### End Mill Adapters HSK – Inch

Catalogue No.	D1	D2	L1	L2	Wt. Lbs	Clamping Screw	No. of Clamp Screw	Wrench Allen Key
HSK63AEM025300	¼	1.00	3.00	2.14	1.79	BELS025025PKG	1	1/8
HSK63AEM038300	3/8	1.00	3.00	1.73	1.76	BELS038031PKG	1	3/16
HSK63AEM050300	½	1.38	3.00	1.97	2.05	BELS044038PKG	1	7/32
HSK63AEM062375	5/8	1.63	3.75	2.09	2.71	BELS056050PKG	1	¼
HSK63AEM075375	¾	1.75	3.75	2.22	2.85	BELS062050PKG	1	5/16
HSK63AEM100375	1	2.00	3.75	2.46	3.11	BELS075056PKG	2	3/8
HSK63AEM125425	1 ¼	2.50	4.25	2.51	4.51	BELS075062PKG	2	3/8

### Drill Chucks



- Recommended for light drilling
- Through the tool holder coolant capability / along cutting tool shank
- Order Example – HSK63ADC13117M

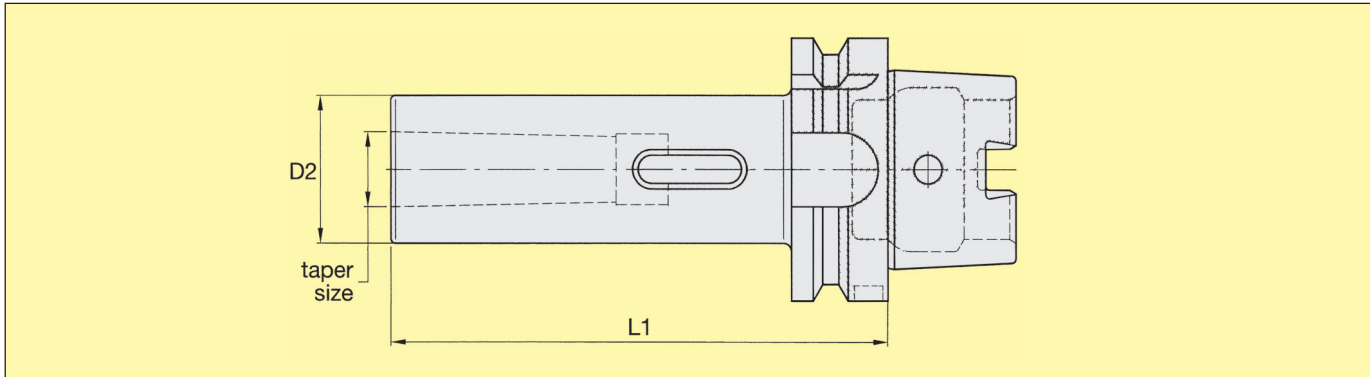
### DC-HSK Form-A

Catalogue No.	D1 Min.-Max	D2	L1	L2	Wt. Kg.	Wrench
HSK63ADC13117M	1 - 13	50	126	117	2.00	135

# HSK 63A Shank Tools

## DIN 69893 part 1, form A

### Morse Taper Adapters

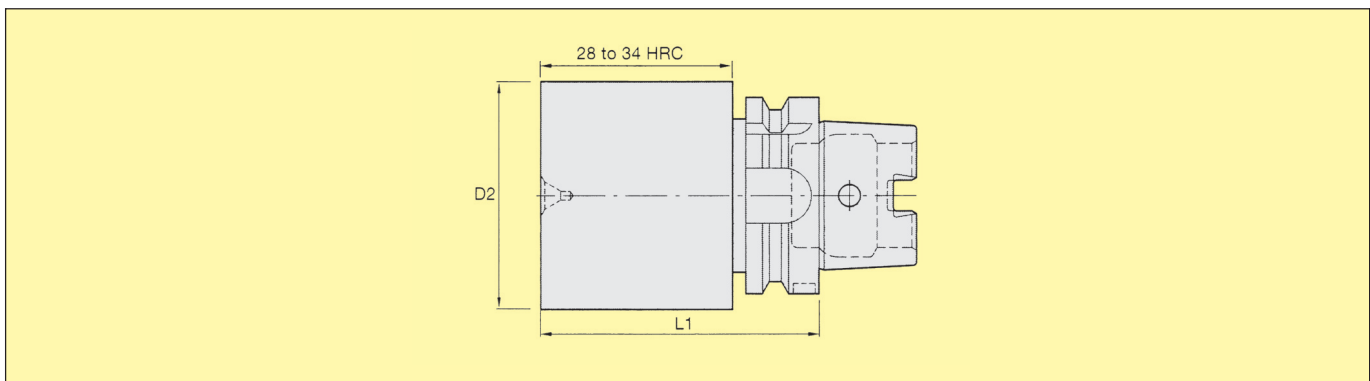


- Balance by Design, No through coolant capability
- Recommended for tools with a morse taper and tang
- Order Example – HSK63AMT1100M

#### MT – HSK Form-A

Catalogue No.	Taper Size	D2	L1	Wt. Kg.
HSK63AMT1100M	1	25	100	0.72
HSK63AMT2120M	2	32	120	0.94
HSK63AMT3140M	3	40	140	1.29
HSK63AMT4160M	4	48	160	1.72

### Boring Bar Blank



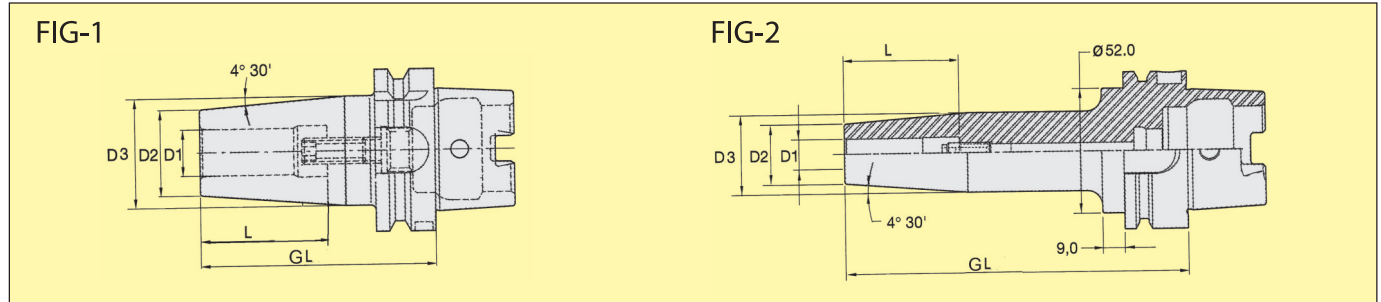
- Machinable front end 28-34 HRC
- Order Example – HSK63ABB080250M

Catalogue No.	D2	L1	Wt. Kg.
HSK63ABB080250M	80.80	250	9.09
HSK63ABB115150M	115.80	150	9.64

# HSK 63A Shank Tools

## DIN 69893 part 1, form A

### Shrink Fit Adapters – Inch



- Pre Balanced G6.3 @ 15,000 rpm, Through tool holder coolant capability, Suitable for carbide & HSS Cutting tool, Run out < 0,003mm (0,0001"), 10mm (3/8") axial adjustment.
- Order Example – HSK63ASF025315
- Dynamically balanced to G2.5 @ 20,000 rpm available on request
- Order Example – HSK63ASF025315-G2.5

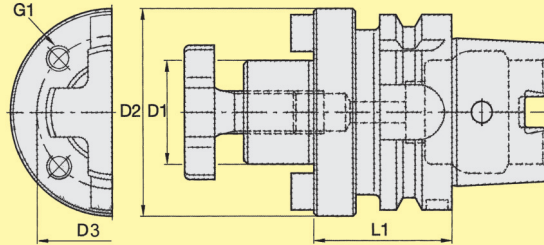
### SF-HSK Form A - Inch

Catalogue No.	FIG	D1	D2	D3	GL	L	Wt. Lbs	Stop Screw
HSK63ASF025315	1	1/4	0.83	1.06	3.15	1.41	1.83	BTTSS05014M
HSK63ASF025472	1	1/4	0.83	1.06	4.72	1.41	2.44	BTTSS05014M
HSK63ASF025630	2	1/4	0.83	1.06	6.30	1.41	2.92	BTTSS05014M
HSK63ASF031315	1	5/16	0.83	1.06	3.15	1.41	1.82	BTTSS06014M
HSK63ASF031472	1	5/16	0.83	1.06	4.72	1.41	2.40	BTTSS06014M
HSK63ASF031630	2	5/16	0.83	1.06	6.30	1.41	2.91	BTTSS06014M
HSK63ASF038335	1	3/8	0.94	1.26	3.35	1.53	2.00	BTTSS08014M
HSK63ASF038472	1	3/8	0.94	1.26	4.72	1.53	2.66	BTTSS08014M
HSK63ASF038630	2	3/8	0.95	1.26	6.30	1.53	3.30	BTTSS08014M
HSK63ASF044354	1	7/16	0.94	1.26	3.54	1.61	2.03	BTTSS10014M
HSK63ASF044472	1	7/16	0.94	1.26	4.72	1.61	2.63	BTTSS10014M
HSK63ASF044630	2	7/16	0.94	1.26	6.30	1.61	3.30	BTTSS10014M
HSK63ASF050354	1	1/2	0.94	1.26	3.54	1.81	2.01	BTTSS10014M
HSK63ASF050472	1	1/2	0.94	1.26	4.72	1.81	2.61	BTTSS10014M
HSK63ASF050630	2	1/2	0.95	1.26	6.30	1.81	3.25	BTTSS10014M
HSK63ASF056354	1	9/16	1.06	1.34	3.54	1.81	2.13	BTTSS10014M
HSK63ASF056472	1	9/16	1.06	1.34	4.72	1.81	3.61	BTTSS10014M
HSK63ASF056630	2	9/16	1.06	1.34	6.30	1.81	3.30	BTTSS10014M
HSK63ASF062374	1	5/8	1.06	1.34	3.74	1.93	2.15	BTTSS12014M
HSK63ASF062472	1	5/8	1.06	1.34	4.72	1.93	2.72	BTTSS12014M
HSK63ASF062630	2	5/8	1.06	1.34	6.30	1.93	3.46	BTTSS12014M
HSK63ASF068374	1	11/16	1.30	1.65	3.74	1.96	2.15	BTTSS12014M
HSK63ASF068630	2	11/16	1.30	1.65	6.30	1.96	3.46	BTTSS12014M
HSK63ASF075394	1	3/4	1.30	1.65	3.94	2.00	2.60	BTTSS16014M
HSK63ASF075630	2	3/4	1.30	1.65	6.30	2.00	4.21	BTTSS16014M
HSK63ASF088394	1	7/8	1.30	1.65	3.94	2.00	2.51	BTTSS16014M
HSK63ASF088630	2	7/8	1.30	1.65	6.30	2.00	4.12	BTTSS16014M
HSK63ASF100453	1	1	1.73	2.08	4.53	2.21	3.88	BTTSS16014M
HSK63ASF100630	2	1	1.73	2.08	6.30	2.21	5.53	BTTSS16014M
HSK63ASF125472	1	1 1/4	1.73	2.08	4.72	2.40	3.73	BTTSS16014M
HSK63ASF125630	2	1 1/4	1.73	2.08	6.30	2.40	5.20	BTTSS16014M

# HSK 63A Shank Tools

## DIN 69893 part 1, form A

### Shell Mill Adapters - Inch

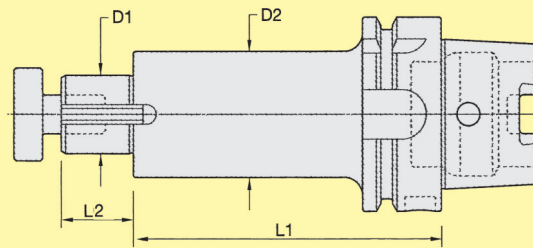


- Balanced by Design, Through the tool holder coolant capability
- Order Example – HSK63ASM050200

### Shell Mill Adapters – Inch

Catalogue No.	D1	D2	D3	L	G1	Wt. Lbs	Lock Screw	Wrench	Drive Key
HSK63ASM050200	1/2	1.75	NA	2.00	NA	2.11	BKLS05	3/16	BKDK04
HSK63ASM075200	3/4	1.75	NA	2.00	NA	2.18	BKLS07	1/4	BKDK05
HSK63ASM100225	1.00	2.19	NA	2.25	NA	2.87	BKLS10	5/16	BKDK06
HSK63ASM125225	1 1/4	2.88	NA	2.25	NA	3.68	BKLS12	5/16	BKDK08
HSK63ASM150225	1 1/2	3.81	NA	2.25	NA	4.49	BKLS15	3/8	BKDK10

### Slitting Cutter Adapters – Inch



- Balanced by Design
- Order Example – HSK63ASA062400

Catalogue No.	D1	D2	L 1	L 2	Wt. Lbs	Lock Screw	Wrench	Drive Key
HSK63ASA062400	5/8	1.25	4.00	0.78	2.22	BKLS07	1/4	BSDK062088
HSK63ASA100400	1	1.61	4.00	0.95	3.09	BKLS10	5/16	BSDK100106
HSK63ASA125400	1 1/4	1.86	4.00	1.09	3.97	BKLS12	5/16	BSDK125119