



QUALITY YOU CAN TRUST. UNBEATABLE VALUE.

POWER CHUCKS



**3H-2/3H-2A**

THRU HOLE 3 JAW

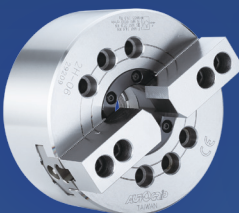
LARGE THRU-HOLE  
POWER CHUCK



**3H/3H-A**

THRU HOLE 3 JAW

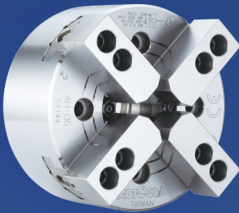
THRU-HOLE  
POWER CHUCK



**2H/2H-A**

THRU HOLE 2 JAW

THRU-HOLE  
POWER CHUCK



**4H/4H-A**

THRU HOLE 4 JAW

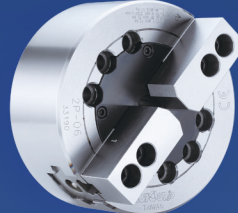
THRU-HOLE  
POWER CHUCK



**3P/3P-A**

NON-THRU HOLE 3 JAW

POWER CHUCK



**2P/2P-A**

NON-THRU HOLE 2 JAW

POWER CHUCK



**3L/3L-A**

THRU HOLE 3 JAW

EXTRA LONG JAW  
STROKE POWER CHUCK



**2L/2L-A**

THRU HOLE 2 JAW

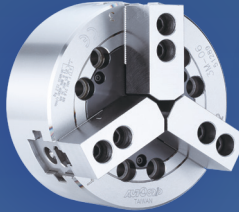
EXTRA LONG JAW  
STROKE POWER CHUCK



**1L**

NON-THRU HOLE 1 JAW

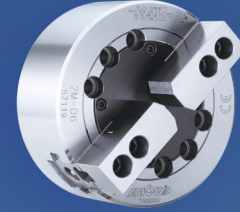
EXTRA LONG JAW  
STROKE POWER CHUCK



**3M**

NON-THRU HOLE 3 JAW

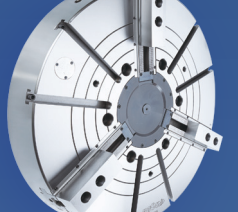
LONG JAW STROKE  
POWER CHUCK



**2M**

NON-THRU HOLE 2 JAW

LONG JAW STROKE  
POWER CHUCK

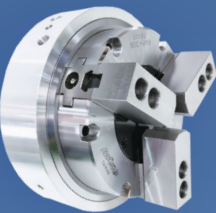


**3V-A**

NON-THRU HOLE 3 JAW

VERTICAL LATHE  
POWER CHUCK

SPECIAL PURPOSE CHUCKS



**RAP**

THRU HOLE 3 JAW

PNEUMATIC  
ROTARY CHUCK



**3D**

NON-THRU HOLE 3 JAW

PULL BACK POWER CHUCK



**2D**

NON-THRU HOLE 2 JAW

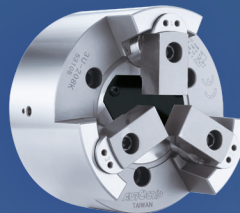
PULL BACK POWER CHUCK



**3U**

THRU HOLE 3 JAW

PULL BACK POWER CHUCK



**3U-K**

NON-THRU HOLE 3 JAW

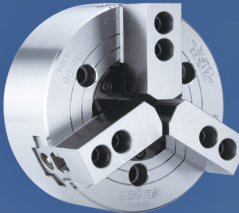
PULL BACK POWER CHUCK



**3E**

NON-THRU HOLE 3 JAW

EXPANSIBLE PULL BACK  
POWER CHUCK



**3N**

NON-THRU HOLE 3 JAW

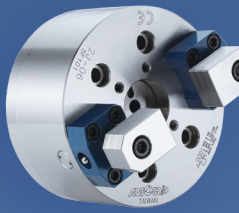
INCLINED MASTER JAWS  
POWER CHUCK



**3J**

NON-THRU HOLE 3 JAW

FINGER POWER CHUCK



**2J**

NON-THRU HOLE 2 JAW

FINGER POWER CHUCK



**3R**

NON-THRU HOLE 3 JAW

SWING COMPENSATING  
POWER CHUCK



**3W**

NON-THRU HOLE 3 JAW

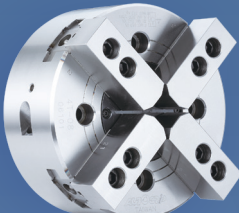
SWING TYPE  
POWER CHUCK



**3Q**

THRU HOLE 3 JAW

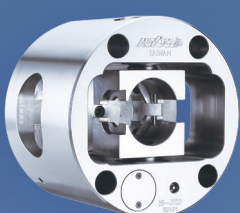
QUICK JAW-CHANGE  
POWER CHUCK



**4T**

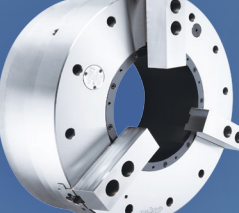
NON-THRU HOLE 4 JAW

FOUR JAW TWO MOTION  
POWER CHUCK



**IS**

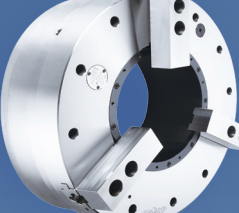
INDEXING POWER CHUCK



**AP**

THRU HOLE 3 JAW

LARGE THRU HOLE  
AIR CHUCK

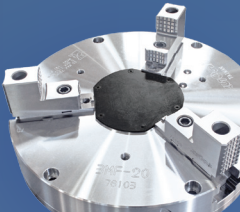


**APS**

THRU HOLE 3 JAW

LARGE THRU HOLE AIR  
CHUCK WITH LONG JAW  
STROKE

MANUAL CHUCKS



**3MF**

NON-THRU HOLE 3 JAW

SELF-CENTERING  
MANUAL CHUCK

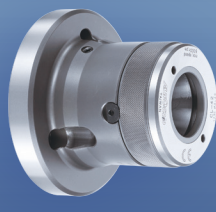
SYNCHRONOUS CLAMPS



**CP**

CRANK TYPE  
SYNCHRONOUS CLAMP

COLLET POWER CHUCKS



**CL/CL-A**

THRU HOLE

COLLET CHUCK



**CB/CB-A**

THRU HOLE

DRAW COLLET CHUCK



**CBE/CBE-A**

THRU HOLE

END STOP COLLET CHUCK



**CBD/CBD-A**

THRU HOLE

DEAD LENGTH  
COLLET CHUCK



**SCB**

STATIONARY DRAW  
COLLET CHUCK



**RG**

RUBBER  
GRIP COLLET



**DIN 6343**

STEEL COLLET





STATIONARY CHUCKS



**VH**

THRU HOLE 2/3 JAW

STATIONARY  
POWER CHUCK



**VP**

NON-THRU HOLE 2/3 JAW

STATIONARY  
POWER CHUCK



**SP**

NON-THRU HOLE 3 JAW

STATIONARY  
POWER CHUCK



**SD**

NON-THRU HOLE 3 JAW

STATIONARY PULL  
BACK POWER CHUCK



**SU**

NON-THRU HOLE 3 JAW

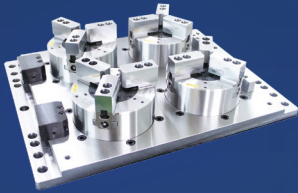
STATIONARY PULL  
BACK POWER CHUCK



**SE**

NON-THRU HOLE 3 JAW

STATIONARY PULL BACK  
POWER CHUCK FOR  
INTERNAL GRIPPING



**MP4**

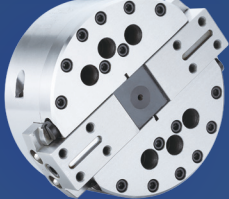
STATIONARY CHUCK  
BASE PLATE

FACING HEADS



**FA**

SINGLE SLIDE  
FACING HEAD



**FD**

DOUBLE SLIDE  
FACING HEAD

ROTARY VALVES / ROTARY JOINTS



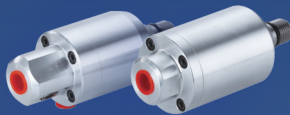
**RV**

HYDRAULIC ROTARY VALVE  
OIL CIRCUIT DISTRIBUTOR



**RV-A**

AIR ROTARY VALVE



**RJ-80 / RJ-90**

ROTATING COOLANT JOINT  
(RJ-90 COMES WITH AN  
AUTOMATIC ON/OFF SEAL)

ROTARY CYLINDERS



**TK**

THRU HOLE

SLIM ROTATING HYDRAULIC  
CYLINDER WITH A SAFETY  
MECHANISM



**TS**

THRU HOLE

SLIM ROTATING HYDRAULIC  
CYLINDER WITH A SAFETY  
MECHANISM



**TH**

THRU HOLE

ROTATING HYDRAULIC  
CYLINDER WITH A SAFETY  
MECHANISM



**TR**

THRU HOLE

SLIM ROTATING HYDRAULIC  
CYLINDER WITH A SAFETY  
MECHANISM



**RK**

NON-THRU HOLE

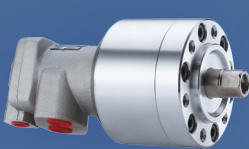
ROTATING HYDRAULIC  
CYLINDER WITH A SAFETY  
MECHANISM



**RK-N**

NON-THRU HOLE

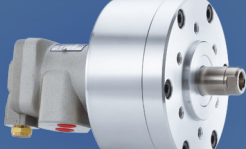
ROTATING HYDRAULIC  
CYLINDER



**RH**

NON-THRU HOLE

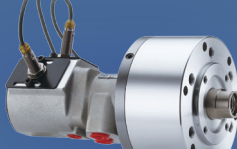
ROTATING HYDRAULIC  
CYLINDER



**RA**

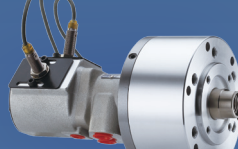
NON-THRU HOLE

ROTATING AIR CYLINDER



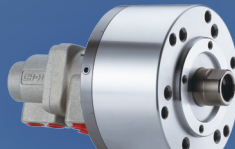
**RS**

STROKE CONTROL  
ROTATING HYDRAULIC  
CYLINDER WITH A SAFETY  
MECHANISM



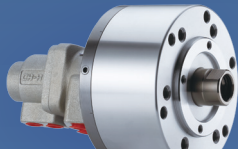
**RS-N**

STROKE CONTROL  
ROTATING HYDRAULIC  
CYLINDER



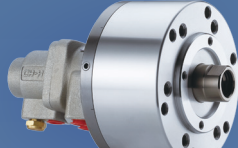
**RL**

ROTATING HYDRAULIC  
CYLINDER WITH COOLANT  
COLLECTION AND A  
SAFETY MECHANISM



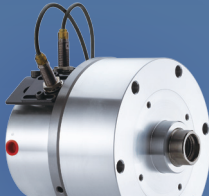
**RL-N**

ROTATING HYDRAULIC  
CYLINDER WITH  
COOLANT COLLECTION



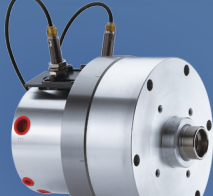
**RL-AN**

ROTATING HYDRAULIC  
CYLINDER WITH  
AIR CONNECTION



**RE**

COMPACT STROKE  
CONTROL HYDRAULIC  
CYLINDER WITH A SAFETY  
MECHANISM



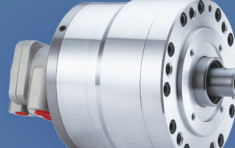
**RE-A**

COMPACT HYDRAULIC  
CYLINDER WITH AIR  
CONNECTION AND A  
SAFETY MECHANISM



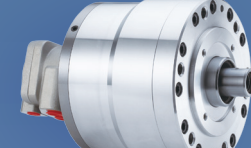
**RE-L**

COMPACT HYDRAULIC  
CYLINDER WITH COOLANT  
CONNECTION AND A  
SAFETY MECHANISM



**RD**

DOUBLE-ROD ROTATING  
HYDRAULIC CYLINDER WITH  
A SAFETY MECHANISM



**RD-N**

DOUBLE-ROD ROTATING  
HYDRAULIC CYLINDER

PARTS & ACCESSORIES



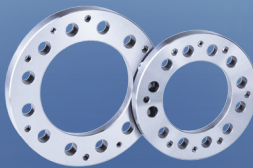
**SJ**

STANDARD SOFT JAW  
(BLANK)



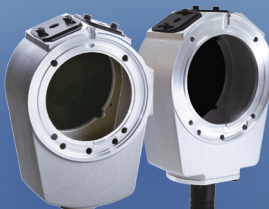
**HJ**

STANDARD HARDENED JAW



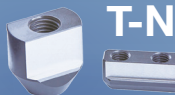
**FL**

CHUCK ADAPTERS

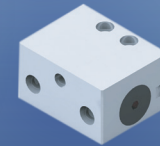


**CT / CT-S08B  
CT-S / CT-S08BS**

COOLANT COLLECTOR  
WITH STROKE CONTROL

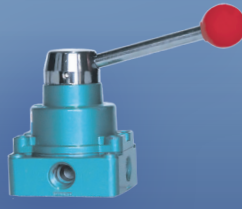


**T-NUT**



**FV-01**

STATIONARY CYLINDER  
LOCK VALVE FOR AIR  
STATIONARY CHUCK



**VH-201**

HAND OPERATED  
AIR VALVE