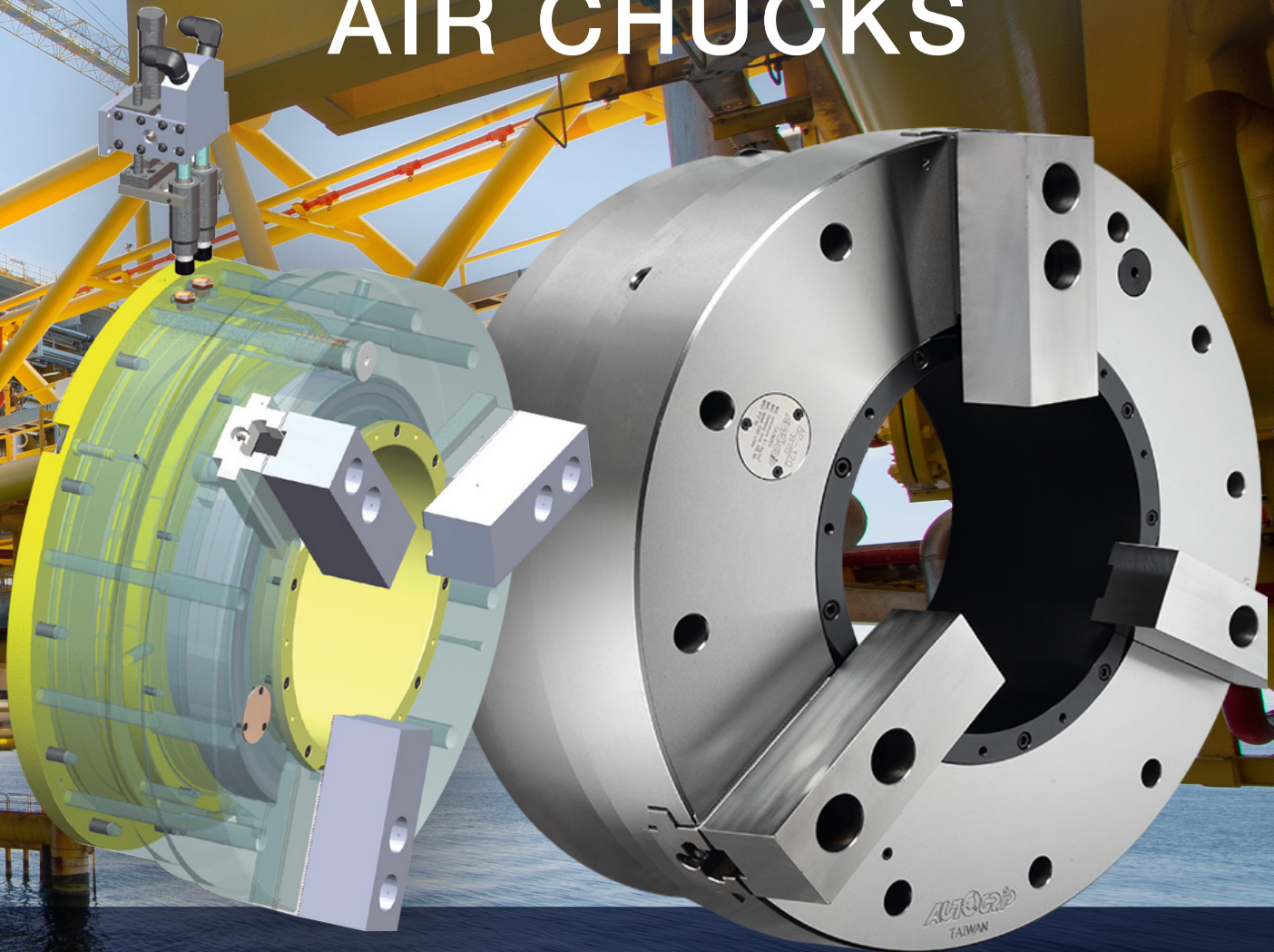




LARGE THRU-HOLE AIR CHUCKS



**BUILT-IN
CYLINDER**

**PRESSURE
DETECTION**

**10"-28"
DIAMETER**

**UP TO 14.8"
THRU-HOLE**

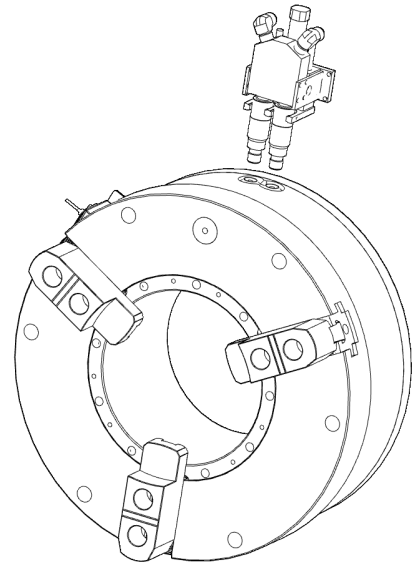
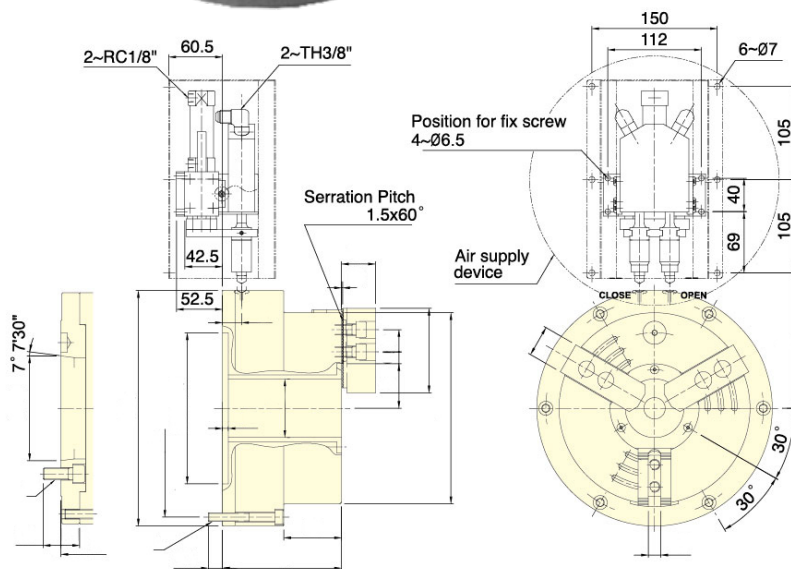
AUTOGRIP Air Chucks can be used as an alternative, and an easy replacement, for manual or hydraulic chucks. Air Chucks are used in a variety of applications such as milling, turning, rotary tables, welding applications, and more, and can be installed in both vertical and horizontal operations. 'A' style short taper adapters are available from stock, and we can produce any adapter or baseplate configuration required to support any application.

LARGE THRU-HOLE AIR CHUCKS

DETAILS



- 3-Jaw
- Large Thru-Hole
- Built-In Air Cylinder
- Quick & Easy Changeover
- Comes with an Air Supply Device
- External + Internal Clamping Capabilities

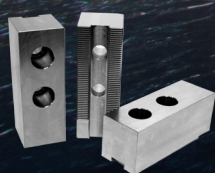


SPECIFICATIONS

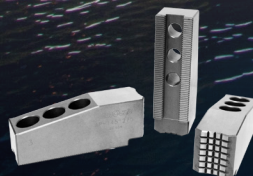
Model	Thru-hole Dia (mm)	Jaw stroke (Dia.) (mm)	Chuck Dia. Max. (mm)	Chuck Dia. Min. (mm)	Max. pressure MPa (kgf/cm ²)	Max. clamping force kN (kgf)	Max. speed min ⁻¹ (r.p.m.)	I kg · m ²	Weight (kg)	Air Consumption lit(at 6kgf/cm ²)
AP-52 A6	52	5.9	170	15	0.6(6.1)	40.4(4118)	4200	0.2	26 27	3.1
AP-66 A6	66	7.6	215	24	0.6(6.1)	51.0(5185)	3500	0.4	38 39	5.1
AP-86 A8	86	8.9	268	43	0.6(6.1)	76.0(7723)	3200	0.7	58 60	8.7
AP-115 A8	115	10.6	330	55	0.6(6.1)	80.0(8155)	3000	1.7	92 95	12

ACCESSORIES

Page 4



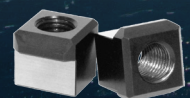
soft jaws



hard jaws



adapters



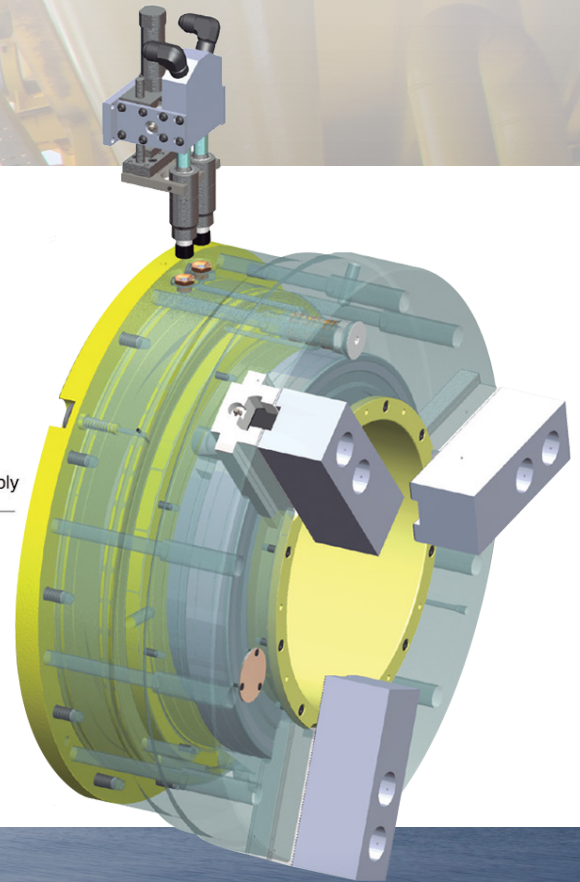
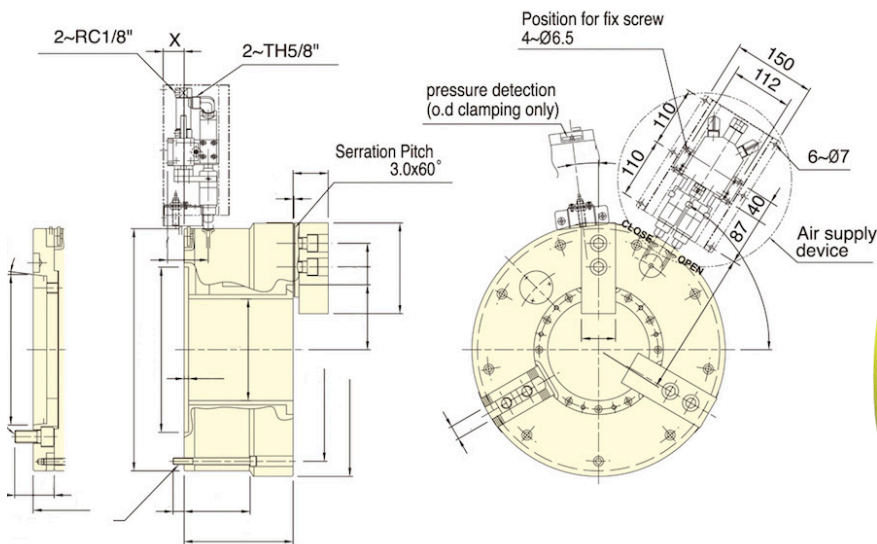
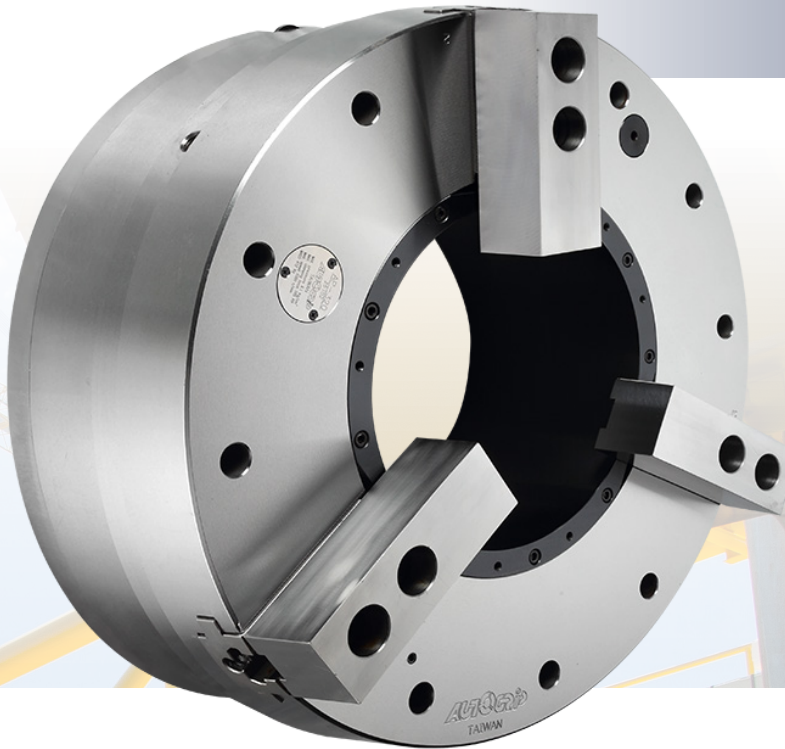
t-nuts

LARGE THRU-HOLE AIR CHUCKS

DETAILS



- 3-Jaw
- Large Thru-Hole
- Built-In Air Cylinder
- Built-In Pressure Detection
- Quick & Easy Changeover
- Comes with an Air Supply Device
- External + Internal Clamping Capabilities



AUTOGRIP pneumatic chucks feature a unique and patented air feed system that utilizes a built-in cylinder for air delivery providing high gripping force and clamping capacity. This patented built-in cylinder eliminates the traditional sealed (distributor) ring. AUTOGRIP'S new patented system greatly reduces the need for maintenance, eliminates down time, and it makes these chucks very easy to install.

SPECIFICATIONS

Model	Thru-hole Dia (mm)	Jaw stroke (Dia.) (mm)	Chucking Dia. Max. (mm)	Chucking Dia. Min. (mm)	Max. pressure MPa (kgf/cm ²)	Max. clamping force kN (kgf)	Max. speed min ⁻¹ (r.p.m.)	I kg · m ²	Weight (kg)	Air Consumption lit(at 6kgf/cm ²)
AP-145 A11	145	14	420	62	0.6(6.1)	85.0(8667)	1700	3.8	156 182	17.8
* AP-185 A15	185	14	460	100	0.6(6.1)	110.0(11216)	1300	6	188 223	22
* AP-230 A15	230	17	535	170	0.6(6.1)	125.0(12742)	1300	11.1	265 310	34
* AP-275 A20	275	17	580	200	0.6(6.1)	140.0(14271)	1100	15.5	301 346	39
* AP-320 A20	320	17	658	200	0.6(6.1)	184.0(18762)	1000	27.2	415 505	45
* AP-375 A20	375	24	738	260	0.6(6.1)	188.0(19115)	850	44.2	530 545	55

* AP 185 thru AP 375 are available with extended jaw strokes

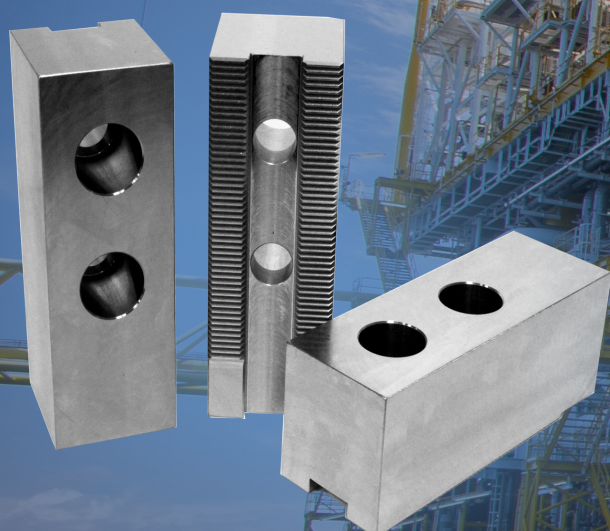
POWER CHUCK ACCESSORIES



AUTOGRIP offers a variety of special parts and accessories to enhance the performance of your Air-Powered chuck, allowing you to handle a variety of manufacturing operations using the same chuck.

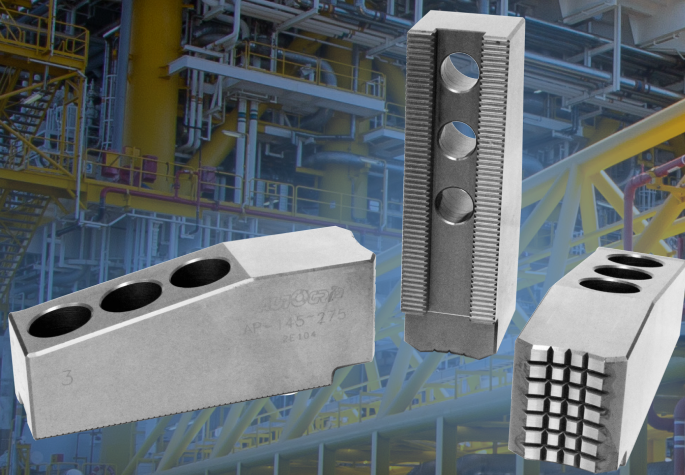
SOFT JAWS

- 1.5mm x 60 & 3.0mm x 60 Serrated Systems
- Soft Jaws can be machined



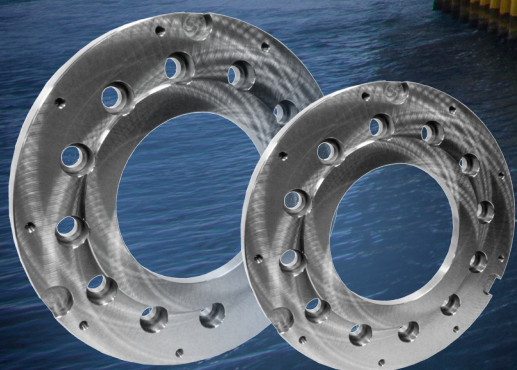
HARD JAWS

- 2-Step
- 1.5mm x 60 & 3.0mm x 60 Serrated Systems
- Increased flexibility for gripping a wider variety of part diameters



ADAPTERS

- Special AP adapters allow AUTOGRIP power chucks to be used in a variety of different machine spindle configurations.



T-NUTS

- AUTOGRIP T-Nuts are used in conjunction with power chuck top jaw systems.

