

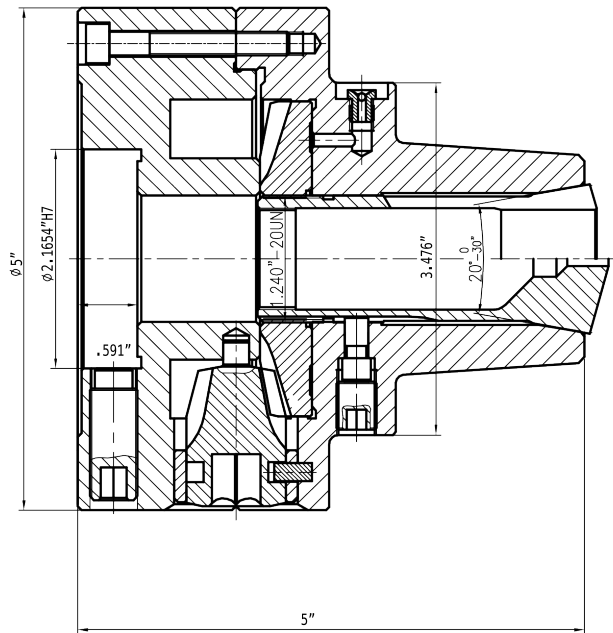
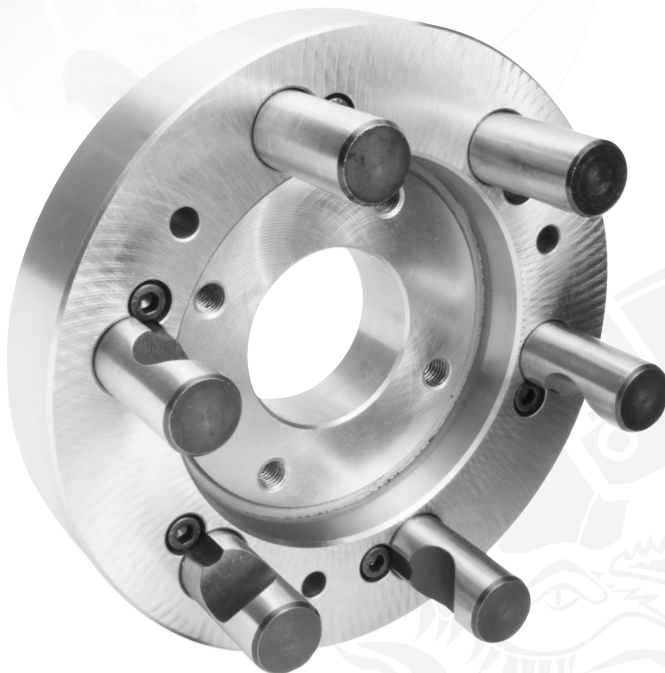
SC COLLET CHUCKS

Adjustable available, 0.0004" T.I.R.

Perfect for small parts turning, facing, drilling, boring, grinding, and milling operations on center lathes, grinding machines, milling machines, and indexers.



5C Adjustable Collet Chucks, T.I.R. 0.0004"



- Two pinion design
- High quality forged steel body
- Scroll and pinions are hardened and ground
- Great for grinding, turning, milling & boring operations
- Fine adjusting screws (4) set up the chuck on a steel fully finished adapter within 0.0004" T.I.R.

Chuck Dia.	Mounting	RPM	T.I.R.	Part #
5"	Adjustable	6000	0.0004"	1-401-0599

Adapters

- All 'D' adapters come with spindle mounting camlock studs and set screws
- All adapters are heat treated for longer life
- All adapters do not require any additional machining

Chuck Dia.	Mounting	Part #
5"	D1-3	FLA-125D3
5"	D1-4	FLA-125D4
5"	1-1/2" - 8 - UN -2B	FLA-125T2
5"	2-3/16" - 10 Hardinge	FLA-125T4
5"	2-1/4" - 8 UN-2B	FLA-125T5