

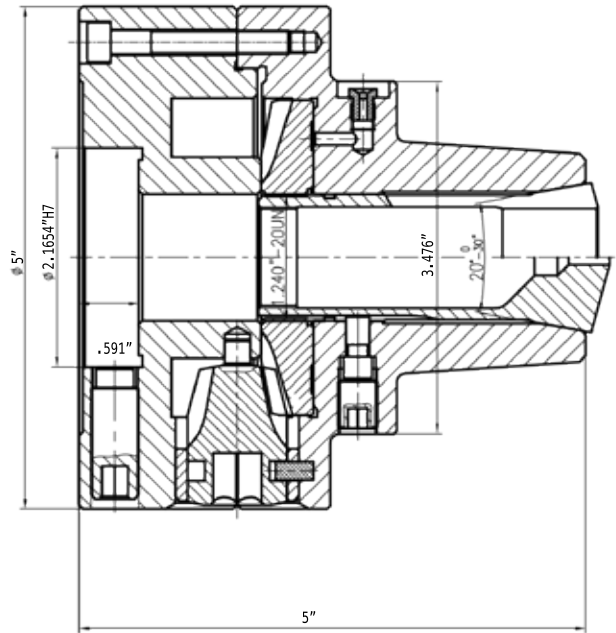
# SC COLLET CHUCKS

**Adjustable, 0.0004" T.I.R.**

Perfect for small parts turning, facing, drilling, boring, grinding, and milling operations on center lathes, grinding machines, milling machines, and indexers.



# 5C Adjustable Collet Chucks, T.I.R. 0.0004"



- Two pinion design
- High quality forged steel body
- Scroll and pinions are hardened and ground
- Great for grinding, turning, milling & boring operations
- Fine adjusting screws (4) set up the chuck on a steel fully finished adapter within 0.0004" T.I.R.

| Chuck Dia. | Mounting   | RPM  | T.I.R.  | Part #     |
|------------|------------|------|---------|------------|
| 5"         | Adjustable | 6000 | 0.0004" | 1-401-0599 |



## Adapters

- All 'D' adapters come with spindle mounting camlock studs and set screws
- All adapters are heat treated for longer life
- All adapters do not require any additional machining

| Chuck Dia. | Mounting              | Part #    |
|------------|-----------------------|-----------|
| 5"         | D1-3                  | FLA-125D3 |
| 5"         | D1-4                  | FLA-125D4 |
| 5"         | 1-1/2" - 8 - UN -2B   | FLA-125T2 |
| 5"         | 2-3/16" - 10 Hardinge | FLA-125T4 |
| 5"         | 2-1/4" - 8 UN-2B      | FLA-125T5 |